

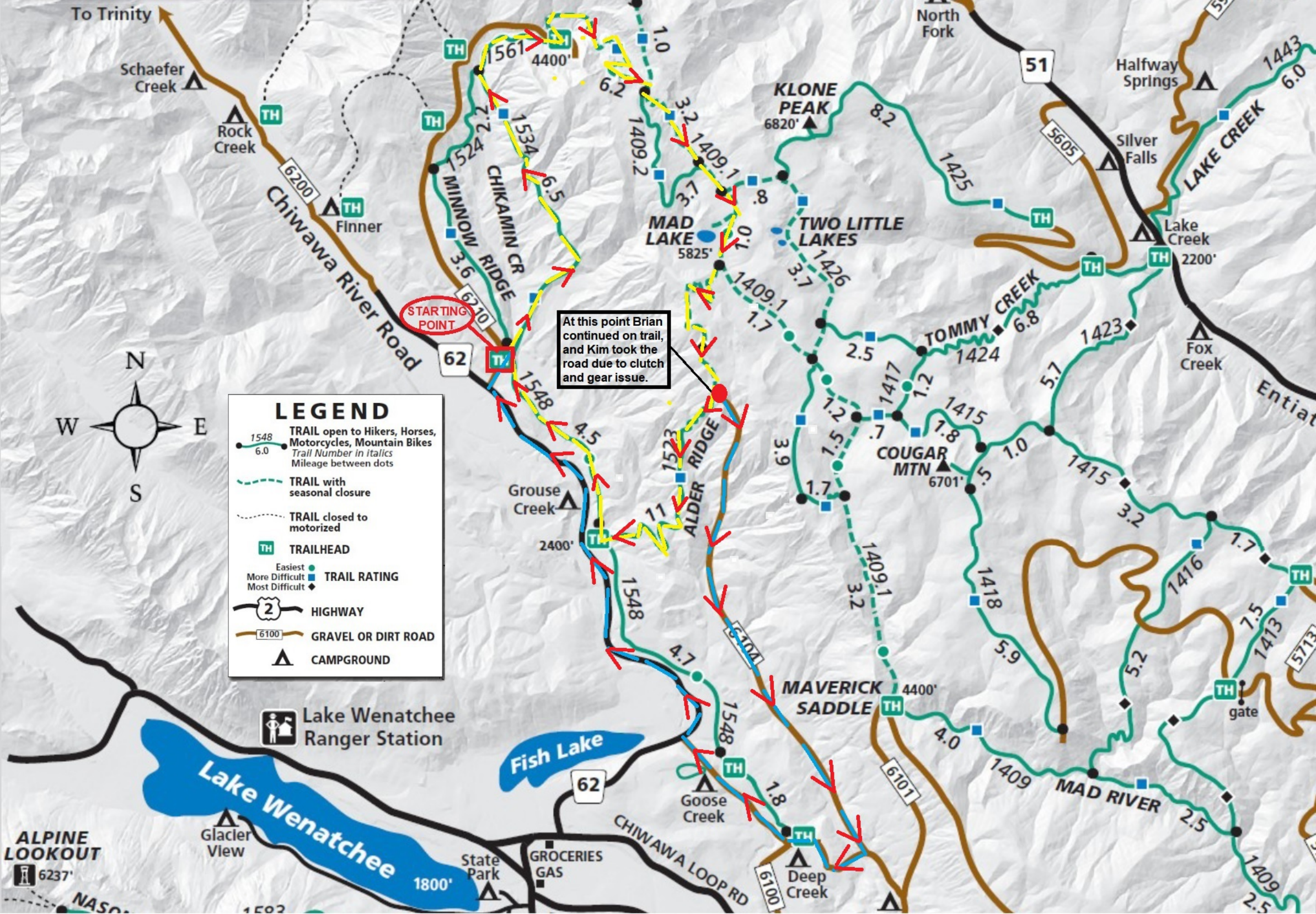
Sunday 10/4/2020 was cloudy/cool day, with no dust and some traffic. Ran into the rock slide trail (fun, fun) and dozen or more wonderful switchbacks. Even the widow maker switchback! Just after the rock slide trail, I smoked my clutch. Lost all clutch. Waited to cool things down, made cable adjustments and "thank God" got use of clutch back, but soon found out I was unable to shift into any gear, so I was stuck in second. Last piece of the trail Brian continued, and I headed down Forest Service road so I wouldn't get stalled somewhere on the trail. Took long time to get back to staging area, since I only have low gear.

**MAD RIVER 10/4/2020**

42  $\frac{1}{2}$  mile

**TOTAL TRAIL MILES = 32.5**





### LEGEND

- TRAIL open to Hikers, Horses, Motorcycles, Mountain Bikes  
*Trail Number in Italics*  
Mileage between dots
- TRAIL with seasonal closure
- TRAIL closed to motorized
- TRAILHEAD
- Easiest
- More Difficult
- Most Difficult
- TRAIL RATING
- HIGHWAY
- GRAVEL OR DIRT ROAD
- CAMPGROUND

At this point Brian continued on trail, and Kim took the road due to clutch and gear issue.

STARTING POINT



**ALPINE LOOKOUT**  
6237'

**Lake Wenatchee**  
1800'

GROceries  
GAS

**MAVERICK SADDLE**  
4400'

**COUGAR MTN**  
6701'

**KLONE PEAK**  
6820'

CHIKAMMIN CR  
MINNOW RIDGE

ALDER RIDGE

TOMMY CREEK

TWO LITTLE LAKES

MAD LAKE

Chiyawa River Road

Silver Falls

Lake Creek

Fox Creek

Lake Wenatchee  
Ranger Station

Glacier View

State Park

Deep Creek

CHIWAWA LOOP RD

6100

6107

62

6200

62

6200

51

5605

5713

51

6.0

6.0

6.8

6.8

6.8

6.8

6.8

6.8

6.8

6.8

6.8

6.8

← MAD RIVER TRAIL →  
NO. 1409.1  
BLUE CR. TR. 1426 0.7 →  
← SHETIPO TR. 1429 3.5

1409.1 →  
1426 0.7 →  
1429 3.5 ←

**MAD RIVER**  
**10/4/2020**



HONDA



**SHIFTER BENT INWARD, UNDER CASE--UNABLE TO SHIFT!!**



**BRUISED MY LEFT  
HAMSTRING. OH  
WELL, ALL PART  
OF OUTDOOR FUN!!**

***SPECIAL THANKS TO BRIAN FOR THIS VIDEO***

**(CLICK ON PHOTO)**

